

# **KISLINGBURY NEWS**

## **February / March 2023**





Phil Beeston	Footpath Warden Chair - Kislingbury Playing Field Ass. Email: <a href="mailto:kislingburyplayingfield@hotmail.co.uk">kislingburyplayingfield@hotmail.co.uk</a>	832146
Sue Deane	Margaret Welsh Charity	831834
Miriam Harris	Margaret Welsh Charity	831835
Anne Upton	Village Archivist	833519
Felicity Dunkley	Village Archivist	830514
Chrissie Key	Village Hall Booking Clerk	831824
Sarah Parker	Kislingbury Facebook Highways Charity (Clerk & Trustee)	07840731451
Scott Parker	VAS Signs	07512729422
Chris Payne	Flood & Snow Warden	07917033843
<i>Vacancy</i>	Tree Warden	
Deni Topliss	Neighbourhood Watch Co-ordinator	07754471120
Alison Ward	Kislingbury Facebook	07770528188

Parish Council Meetings are usually held on the third Tuesday of each month in Kislingbury Village Hall at 7pm. All meetings begin with an opportunity for villagers to ask questions or raise matters of concern. The press and members of the public are welcome to attend.

Minutes can be seen on Parish Notice Boards and online at:

[www.kislingburypc.org.uk](http://www.kislingburypc.org.uk)

## Advertising Rates for the Kislingbury News

### Residents

**Half Page Advert**  
**1 issue £25 / 1 year £60**  
**Quarter Page Advert**  
**1 issue £20 / 1 year £40**

**Next deadline is**  
**MARCH 24<sup>th</sup>, 2023**

### Non-Residents

**Half Page Advert**  
**1 issue £30 / 1 year £85**  
**Quarter Page Advert**  
**1 issue £25 / 1 year £60**

**Please send all adverts  
and any additional  
Information by email in  
electronic format to:**

**[kislingburynews@hotmail.co.uk](mailto:kislingburynews@hotmail.co.uk)**

# **KISLINGBURY MINI MARKET**

## **POST OFFICE**

**WIDE RANGE OF PRODUCTS & SERVICES**

**Fresh Coffee | Bread & Cakes | Dairy | Groceries | Fruit & Veg | Alcohol | Frozen Food | Tobacco | Pet Food | Greeting Cards | National Lottery | Bill Payment | Everyday Banking**

---

**DIGITAL ADVERTISING NOW AVAILABLE IN STORE**

---

### **Shop Opening Hours**

**Monday to Friday 07:00 - 19:00**

**Saturday 08:00-19:00**

**Sunday 08:00 - 16:00**

**HOME DELIVERY AVAILABLE**

### **Post Office Opening Hours**

**Monday - Friday 10:00-16:00**

**Saturday 10:00-13:00**

**Sunday Closed**

**PHONE: 01604 830328**

*Tom's Blinds*

**Tom Brown**

**Fitter of blinds with over  
10 years of experience**

**Located in Nether Heyford**

**Contact us for a free, no obligation quote**

**Phone: 07740743628**

**Email: [toms.blinds@outlook.com](mailto:toms.blinds@outlook.com)**

**[www.tomsblinds.co.uk](http://www.tomsblinds.co.uk)**



**Find us on Facebook**



## **February and March 2023**

The deadline for the April/May issue is **Friday, March 24th, 2023.**

Where possible contributions should be sent in electronic format by email to:

**kislingburynews@hotmail.co.uk**

or delivered to Barbara Floyer, at 6 The Orchard, Kislingbury.

### **Village Diary**

#### **February**

- 11th A Night at The Musicals, Village Hall, 7pm (see page 13)
- 21st Parish Council Meeting, Village Hall, 7pm
- 27th Bugbrooke & District Flower Club, 7.30pm, Nether Heyford Village Hall

#### **March**

- 21st Parish Council Meeting, Village Hall, 7pm
- 23rd Annual Parish Church Meeting, St Luke's, 7.30pm
- 24th Spring Pudding Party, St Luke's Church, 7pm (see page 11)
- 26th Family worship for Mothering Sunday, St Luke's 11am
- 27th Bugbrooke & District Flower Club, 7.30pm, Nether Heyford Village Hall

### **Regular Events**

Play Group open during Term Time at Village Hall

Bugbrooke and District Flower Club. 4th Monday of the month,  
7.30, Nether Heyford Village Hall

Bell Ringing Monday Nights 7.30pm – 8.30pm

Pilates - Tuesday, 2pm at Village Hall

Kislingbury Parish Council meets 3rd Tuesday of every month in the Village Hall

**Kraft Shack Group - Every Wednesday - 8pm**

**further information - Tel: 07788737052 or 01604 754518 or  
email: mopalmer@gmail.com**

Voyage of Light every 2nd Tuesday of the month excluding January and August.

KOFs - Every Thursday 10.30am at the Village Hall

**Line Dance Classes in Village Hall - Thursday, Beginners 12.30 -13.30**

**& Improvers 13.00 - 15.00 - 07788 737052 or 01604 754518**

Art Group - Thursday afternoons at the Village Hall 2pm - 4pm

Cycle Club - Meets at Sun Inn every Saturday at 9.30am

***Follow the village on Facebook -***



**@Kislingbury Village Info**

## Kislingbury Parish Council January 2023

These notes highlight some of the issues that have been discussed by the Parish Council recently. They supplement the publicly available minutes which are available online (on the Parish Council website) and on the notice boards around the village. The Parish Council meets at the Village Hall at 7.00 p.m., generally on the third Tuesday of every month apart from August. Since the last set of Parish Council Notes (December 2022/January 2022) there have been Parish Council meetings on Tuesday, 6th December 2022 and 17th January 2023. Our next meeting will be on **Tuesday, 21st February 2023 at 7.00 p.m.** Parish Council meetings are, legally, the only context in which the Parish Council can make decisions. This is particularly important when it comes to spending the public money that the council is responsible for as the most local tier of English Local Government.

Kislingbury residents are always most welcome to attend any Parish Council meeting and have an opportunity to raise any issues as part of the Parishioner's Voice agenda item. Parishioner's Voice is a very direct way of raising issues and concerns with your Parish Council. This item is always early on the agenda. While you do not have to stay for the whole meeting, I would encourage you to stay on to observe at least some of the meeting to see the range of issues that come to the Parish Council.

In previous Parish Council Notes, I expressed the Parish Council's appreciation of the very strong response from the village in respect of the proposal to build 58 houses on land off Camp Lane and Beech Lane. Originally, there should have been a decision from West Northants Council about this application in September 2022. As the Parish Council had not heard anything from the Planning Department, we have checked the planning portal. At the moment this application is listed as pending which suggests that no decisions have been made. In the past the Parish Council has been informed by WNC Planning, via the Parish Clerk, about any planning proposals. Unfortunately, this does not seem to be happening at the moment and we are having to monitor the portal. This makes it harder both to make timely comments as the Parish Council as well as making it harder to alert the village as a whole, as we did in relation to the Camp Lane/Beech Lane proposal. We are especially concerned about this as a couple of recent planning decisions have made no reference to the views expressed by the Parish Council on behalf of the village. The Parish Clerk is taking up these issues with the Planning Department.

The Parish Council budget for 2023-24, which was finalised at the Parish Council meeting in December 2022, has been submitted to WNC and formally acknowledged by them. This will determine how the Parish Council spends *your* money - the money that is raised via Council Tax across about around twenty separate budget headings. These include aspects such as street lighting, grass mowing, the allotments and the Community Pantry. The Community Pantry scheme is open to all Kislingbury residents in need and provides a weekly grocery box. All requests for help will be treated confidentially and comply with data protection regulations. If you wish to apply, please contact the Parish Clerk by phone (01604 858226) or email ([parishclerk811@btinternet.com](mailto:parishclerk811@btinternet.com)). I would like to thank those involved in ensuring the success of the Pantry but please do keep making your generous donations of food and money.

The Parish Council was pleased to hear that the Baptist Chapel is offering a warm space on a Friday. To find out more we would also welcome any approaches from village organisations that have ideas that might help with the 'cost of living crisis', for example by offering a 'community living room'. Again please contact our Parish Clerk to discuss your suggestions.

In addition to individual villagers, the Parish Council also has a representative on the Bugbrooke Medical Centre Patient Participation Group (PPG). We were pleased to receive a report that Maddie Langthorne, as the Practice's Compliance Coordinator has been able to ensure a much higher level of communication about developments at the practice.

On the 6th January 2023, the driver of a white BMW hit and damaged the river bridge causing extensive damage to the bridge. The driver then parked on the Cromwell Cottage where he was recorded on CCTV. The Parish Council has been concerned about the approaches to the bridge for some time especially given increased traffic volumes and has made repeated approaches to WNC for action to introduce some signage to control traffic. We will be continuing to put pressure on WNC about this. The Parish Council understands that the full repair will require a road closure of two or three days.

It may surprise you to know that there are 11 dog bins around the village. However, despite this two (at the Playing Field entrance and on Mill Road opposite the Baptist Church) are often overflowing. The Parish Council is going to purchase two

*Cont. on page 8*

# *A Cut Above*

Landscape and Tree Care

All tree work undertaken, all garden maintenance carried out including:

- Lawn care
- Turfing
- Patios
- Fencing

**Please call for a free quote or professional local advice.**

Mobile: 07939209791

Email: joebrandom@hotmail.co.uk

Kiln dried firewood also available for delivery.



36 Millers Close, Kislisbury



## **Goldmasters IT and Digital Media**

- Website design, Photoshop and illustration.
- Social media, branding & helping you claim that ideal username handle.
- Need help sorting out your current computer, laptop, or mobile phone?
- Advice about the best PC or phone and setup. Or printer and networking issues.
- Backup systems and advice to ensure you never lose content.
- IT disposal to help you enjoy a clutter free life.

I can also give tuition and advice for emails, Internet or even buying and selling on eBay etc. No fix, no fee!

From software to hardware and digital media, Goldmasters can help.

**Just call Jack Gold (BA Hons) on 01604 831882 or 07879 567220** for a very reasonably priced quote. Or email: **contact@goldmaster.site**



## ***Parish Council Cont from page 6***

larger size bins to replace these two. But I will also appeal to dog walkers to either use the nearest emptier bin or take your dog's excrement home.

The WNC budget is currently on their website for public consultation. They are proposing increasing the cost of emptying green bins and also emptying waste bins on a three-week cycle rather than fortnightly. You may wish to comment on these proposals.

Last year the Platinum Jubilee was celebrated. Looking ahead, there is an additional Bank Holiday on 8th May to mark the coronation of King Charles. In advance of this the Parish Council will be inviting interested local organisations to the February Parish Council meeting so that ideas for celebrating the coronation can be shared

Having welcomed a new Parish Councillor in the last notes, on this occasion we have to say goodbye to James Ball. We have appreciated James' input on technical matters and on setting up the new Parish Council website. This means that the Parish Council is now looking for two Parish Councillors. Additionally, there is still a vacancy for a tree warden.

If you think you might be interested but want to know a little more before committing yourself please get in touch with the Parish Clerk to find out what is involved. From a personal point of view I would like to add that despite some of the frustrations of negotiating with other organisations, becoming a Parish Councillor is a great way to become part of developing a community in Kislingbury. We would particularly welcome younger people, and people who (like me) may be new to the village.

Recently, we have seen the Olde Red Lion close and the Friendship Group cease meeting. During the pandemic the butcher's shop closed. The last Kislingbury News had a piece from the Village Hall saying that no one had come forward to be a committee member. I understand that many villagers have yet to use the Mini Market (Post Office) since it changed hands despite its range of services and support for the community. If Kislingbury is to be a community rather than just a pleasant village where people happen to live, then all the village groups and businesses need your support.

***Dr Jonathan Hughes, Chairman, Kislingbury Parish Council***

# John Masters

Established 1980

## Painting and Decorating Services



Interior – Exterior – Period Work  
Professional, Friendly & Reliable  
Estimates and Advice Free  
References Gladly Supplied  
Quality Work Guaranteed

**Tel: 01604 830632**

**Mobile: 07718 283765**

**E-mail: [jmasters\\_decorating@hotmail.co.uk](mailto:jmasters_decorating@hotmail.co.uk)**

**40 Mill Lane, Kislingbury, Northampton NN7 4BD.**

# A.C. HARRISON

## BUILDING AND LANDSCAPING

**EXTENSIONS \* BRICK & STONEMWORK**

**DRIVEWAYS & PATIOS \* BLOCK PAVING**

**LANDSCAPING \* GROUNDWORK**

**Office: 01604 832181**

**f acharrisonbuilders**

**Mob: 07932 802287**

**✉ acharrisonbuilders@gmail.com**

## THE PARISH CHURCH OF ST LUKE

It was lovely to see so many people at our Christmas Services and events. We hope you enjoyed them. Big thanks to Sarah Parker for providing the “Disco” atmosphere at our Carol Singing on the 19th December. It was an awful night so we moved onto the church path which offered a bit of shelter. Thanks to all those brave singers who came and thanks to Lucy and James for providing mulled wine after the event, which was exceedingly welcome!

### SERVICES

As you will see from the back page, we have several Benefice Services (i.e. one service for all four parishes) over the next couple of months. Revd. Ann Slater, who has been to Kislingbury on several occasions, will take the 5th February service at Harpole, and we welcome back Revd. Richard Ormston, Archdeacon of Northampton on 26th February, again at Harpole. Revd. Peter Allen will be the celebrant and preacher on 5th March at Rothersthorpe.

**Our ANNUAL PARISH CHURCH MEETING takes place on  
Thursday 23rd MARCH at 7.30pm in the church.**

This is the formal AGM of the church when members of the Parochial Church Council and other officers are elected and reports on the activities of the church the previous year are adopted. However, it also gives an opportunity to present and discuss new thoughts/ideas etc. for this coming year.

**EVERYONE is welcome.**

### NEW NOTICE BOARD

We now have the new, more user-friendly, notice board in place by the main gate. Our thanks go to the two Kislingbury charities - the Village Fayre Committee and the Community Group, for their very kind contributions towards the cost, and for other donations received.

### DRAINAGE WORKS

Within the next few months, upgrading of the present old and inadequate drainage system on the south side of the church will be taking place. The majority of the work runs under the main church pathway, which will inevitably mean some restricted access for a short period.

# Spring Pudding Party

Friday 24th March 2023 at 7.00pm at St Luke's Church



A huge variety of  
desserts and puddings  
for you to enjoy

**£10.00 per ticket**  
including nibbles, desserts  
and your first drink  
plus good company,  
chat and a quiz

Additional drinks can be  
bought and there will  
also be a raffle

All proceeds towards the  
church fabric fund

Please contact  
**Sarah, 07840731451**  
or **Dawn, 07786070190**  
to purchase your tickets

Book early to avoid  
disappointment and at the  
latest by 10th March



**THE FOLLOWING NOTICE WAS ANNOUNCED  
ON CHRISTMAS DAY IN CHURCH**

**APPOINTMENT OF RECTOR**

I am delighted to announce that following interview and with the agreement of Bishop Donald and the Parish Representatives, The Revd. Nic Edwards, currently Assistant Curate at St Peter and St Paul, Moulton, has been offered and has accepted the invitation to become Rector in the Bugbrooke, Harpole, Kislingbury and Rothersthorpe Benefice.

Bishop Donald and I are very grateful for the continuation of the ministry of the Parishes in the service of Christ during the vacancy.

Please pray for Nic as he completes his ministry in Moulton and as he prepares to move to work with the villages in the Benefice.

**The Venerable Richard Ormston  
Archdeacon of Northampton**

**What a wonderful Christmas present!**

Nic and his young family will be living in the Rectory at Bugbrooke and we hope that his formal Induction Service will take place in the Spring.

---

**LIGHT UP ST LUKE'S**



The draw for December took place.

Many thanks to Liz Roberts who drew David Vernon's winning ticket for December.

Congratulations to David and thanks to Liz.

If there is anyone reading this who would like a number for the Light up St Luke's Lottery please let me know, I have several available.

The cost of each number is **only £5 per year** and you could win £25 monthly Jan to May and July to November, and £50 for June and December, a great way of helping keep our church lit, which is lovely to see.

Also if there is anyone who would like to pick the monthly number, please let me know, I am always looking out for people to pick the number each month.

Take care everyone and stay safe.

Deni Topliss, Mob 07754471120



Kislingbury Community Group  
Presents

# *A Night at the Musicals*

February

SATURDAY

11

AT 7:00 PM

2023

FOR 7.30 START

Join us for a truly Musical Evening and  
hear west end singers perform hits from  
all the shows.

At Kislingbury Village Hall

**FOR TICKETS - Contact Pat Kidson 07932 566054  
Tickets £25 - Includes Food**

## Bugbrooke and District Flower Society

Our AGM followed by a buffet in January was well attended. The last year has been encouraging, we increased our Membership and enjoyed inspiring Demonstrations.

We ended our year with a very entertaining Demonstration by Alison Suffolk . In December we enjoyed a Workshop and members took home Christmas designs of a very high standard .

**Monday February 27th** we begin our year with a Demonstration by Lynne Sharp her title, '**Floral Gems**'.

**March 27th** our President Simone Squire will give a talk, '**Joys of Spring**'.

**April 24th** Joanna Davies her title, '**Blooms and Tunes**'.

You are invited to join us for an evening of '**Friendship and Flowers**' at Nether Heyford Village Hall on the **Fourth Monday of the Month at 7.30pm**.

For more information contact , Dianne 01604 830063 Simone 01327 342167

---

## THE CHILDREN'S SOCIETY

**£325.86** was raised this year for this very worthy cause. Thank you so much to all those who gave, either by offering a donation or via boxes at home.

---

## Kislingbury Highways Charity Grant 2023 Applications

Applications are invited from clubs, organisations or groups from within the village for financial help or who wish to improve their facilities. Applications must not have received help from the rating system when initially formed.

The Trustees will meet in Feb 2023 to discuss applications. Please send applications directly, ideally by email, to me including a copy of current bank balance sheet **by 10th Feb 2023**. Thank you.

**Sarah Parker, [cookiesh@sky.com](mailto:cookiesh@sky.com)  
37 Nene Way, Kislingbury**

## Kislingbury Amblers



We are a group of like minded individuals who meet usually on the first and third Wednesday of each month to have a walk of about 5 miles in the local area and then a pub lunch.

If you would like more information or to join the group  
**Please call John on 07977938311 - ALL ARE WELCOME**

**First Walk** - The arrangements were that we would leave Brafield on the Church Green at 9.45am promptly. As that time approached our leader was nowhere to be seen, a suggestion that we leave without him was squashed as a few seconds later he appeared large as life.

Cutting across a field and passing the old forge we approached and crossed the A428, it was mentioned later that we took the wrong route across the road, that might have been the case but it did not stop everyone from following. We followed the path round the edges of a number of grass fields until we eventually reached the Northampton International Raceway, for a short time walking alongside the old Northampton to Bedford railway line. We turned left on to the road, 150 yards later we went right across the fields until we came across farm buildings and a pond where we took our break.

We walked alongside a field full of large solar panels and then continuing through a small nature reserve we encountered a field with a herd of cows who were very curious about us. It appears in England 4/5 persons are killed by cows each year, this fact caused a certain amount of apprehension in a few of our group, panic is a better word. We successfully negotiated the cows and entered the village of Denton, being met by Charlie and his two geriatric friends!!

Leaving Denton we walked by two alpacas, uphill and down dale across the arable fields to return to Brafield on the Green and the second pond of our walk. The majority of us retired to the White Hart pub in Great Houghton for an excellent lunch.

**Second Walk** - This 5-mile walk started at the Harlestone Golf club car park and then wended its way around the pretty village of Upper Harlestone, with its delightful stone and thatched cottages and gently rolling fields, until we reached a path that led to Lower Harlestone. Although our leader had allegedly pre-walked the route, we arrived early at our meeting point for walkers who only wanted to do the latter part of the walk, so the group had an unexpected, but enjoyable, cup of coffee at the Fox and Hounds in Lower Harlestone, waiting for the rest of the walkers to arrive.

We then set off across fields to the edge of Harlestone Firs, turned left into the woods and then kept to the edge of the woods for a mile or two until we reached an almost hidden gate that took us onto a path parallel to the railway line which we followed until



we reached a track that took us up over the hill and back to Lower Harlestone. Here we crossed the main road at the bottom of the hill and followed the footpath back past the village school, church and eventually to the Golf Club where we had a very tasty Christmas lunch, which was attended by walkers and their partners. Many in the group commented on the very good food, lovely views and excellent service at the Golf Club, which is open to non-members daily.

**January** - Meeting in Moulton for a 10.00am prompt start, we actually left three minutes late. This was due to a senior moment by myself when two letters in the meeting post code were reversed. I might add that the error was also missed by my PA when she checked the email to be sent out. After receiving a certain amount of abuse from one of our number we left Moulton with my ears ringing, heading towards and passing through Crowfield Common Nature Reserve and onward to Overstone.

Meeting another member of our group near Overstone Church, we turned left and headed across the fields towards Cow Pasture Spinney. Shortly afterwards we stopped for a break under a mature tree, species not noted, more abuse came my way for stopping in such a windy spot. Continuing across the field, along the bridle way we reached and crossed the busy A43, this section being the muddiest of our walk.

Upon reaching Rectory Farm we turned left passing the Overstone Old Rectory, which was a considerable way from Overstone! Passing through Overstone Grange Farm we proceeded along grassland negotiating a few stiles on the way back to Moulton. Retiring to the Old Cobbler for lunch.

On completion of the walk a new number remarked what a friendly bunch we are, she may change her mind after a few more walks!

**Second walk** - This walk was local starting at the village end of Camp Lane. Nine amblers left Camp Lane and crossed two fields joining the Pineham Activity Trail. After climbing the bund surrounding the warehouses to take in the extensive view across the Nene Valley we followed the trail to Upton Valley Way.

Crossing the road we followed the track between hedges to Pineham, then we went through the houses to the Nursery roundabout where we cut off along by the river and under the road. Crossing two footbridges we came into the grassy area between the canal and brook. Walking out onto the Banbury Lane we turned over the canal bridge where we took our break.


Following the canal towpath towards Northampton we left the canal before the A43 roundabout and crossed the "green bridge" into Upton Park. We then followed the track along the bottom of the park back to the south end of Camp Lane which we followed back to the starting point. We then drove to the Turnpike at Harpole for lunch.


# 100% NO SALE, NO FEE

- No Upfront Marketing Fee
- No Withdrawal Fee
- Local and Experienced
- Free Energy Performance Certificate
- Free Premium Listing
- Free 360° Virtual Tour



Check out our reviews on Facebook

 Chris Gibson  
- Horts Property Consultant

 **arla** naea  
propertymark



PERSONAL • PROFESSIONAL • PROACTIVE

## PRIDE & JOY AUTOS

Body and Paint Refinishing Specialists

Car / Van / Bike

*Dents / Scuffs / Scratches / Alloy Wheels*

*Smart Repair / Crash Repair / Custom Re-Spray / Restoration*

*Aluminium / Steel / Plastic / Glass Fibre / Carbon Fibre*

**PLEASE CALL OR EMAIL FOR A FREE QUOTE**

**07483 893339**

**prideandjoyautos@gmail.com**

Watling Street, Paulerspury, Towcester, NN12 6LQ

**\*FREE COLLECTION /  
DELIVERY IN KISLINGBURY  
15 Years Experience**



## KISLINGBURY CHRISTMAS MARKET

Our sincere thanks to everyone who came along and supported the Christmas Market on November 26th. As a result of that support we were able to fund twelve Christmas Hampers for families in need in the village and transport for the children at the school to attend the Christmas show at the Royal and Derngate.

At the market the “ **Name the Chimp** ” competition was won by Marian Seal, and the raffle prize winners were.....

- 1st prize....Ken Longland
- 2nd prize....Donna Combs
- 3rd prize....Nick West
- 4th prize....Sandra Burkett

Thanks also to all the volunteer helpers who ensured a very enjoyable day for everyone.

Our next event in the Village Hall will take place on **Saturday February 11th** and is:-  
“ **A Night at the Musicals** “, with songs from all the West End shows. (See page 13).

**To reserve your tickets please contact Pat Kidson on 07932 566054.**

---

## Save the date ....

**MAY 29th 2023**

**Food and Drink festival**

**Kislingbury Playing Fields, Beech Lane**



---

## Bugbrooke Medical Practice

The surgery will be closed for staff training from 12.15 on the following dates:

Wednesday, 22nd February

Wednesday, 22nd March

# Cave & Sons

Stockbroking | Investment Management | Financial Advice

Established in 1906, Cave & Sons is an independent company based in Northampton offering a range of investment management, stockbroking and financial planning services. As one of the oldest surviving independent stockbrokers in the UK, Cave & Sons has a multi-generational reputation and is recognised for providing an on-going client service of the highest calibre.

For more information, please contact Financial Planner and Kislingbury resident, Scott Newbould on 01604 621421 or email [snewbould@caves.co.uk](mailto:snewbould@caves.co.uk) or visit [www.caves.co.uk](http://www.caves.co.uk).

Cave & Sons Ltd is authorised and regulated by the Financial Conduct Authority (FCA), Financial Services Register number 143715.



**DAVID COSBY**  
**ESTATE AGENTS**

- INDEPENDENT & PROFESSIONAL
- LEGAL AND SURVEYING EXPERTISE
- ABSOLUTELY NO HIDDEN COSTS

**1%**  
Inc. VAT

t: 01604 979628

e: [enquiries@davidcosby.co.uk](mailto:enquiries@davidcosby.co.uk)

Farthingstone, Northampton, NN12



**RICS**<sup>®</sup>

**rightmove**

# KISLINGBURY PARISH COUNCIL

*Clerk: Mrs Ann Addison*

*The Paddocks, Baker Street, Gayton, Northampton, NN7 3EZ*

*Tel: 01604 858226 & Email: [ann.addison97@gmail.com](mailto:ann.addison97@gmail.com) or [parishclerk811@btinternet.com](mailto:parishclerk811@btinternet.com)*



## **CURRENTLY, KISLINGBURY PARISH COUNCIL HAS TWO VACANCIES**

**Would you like to help represent the interests of the whole community?  
Do you understand the needs of different groups  
in the community such as the young and elderly?**

If so, and you are 18 years or over, live in the Parish of Kislingbury or within 3 miles of the Parish boundary, and would like to become a member of the Parish Council, please contact the Clerk at the above address, in writing or via email.

The Council meets on the **third Tuesday in the month** except during August and will be holding the next meeting **at 7.00 pm in the village hall on the 21st February 2023.**

Do come along and tell the present team why you would like to join the Council.

**If you care about your community and would like to help to make a real difference, then why not become a Parish Councillor.**

## ***Cakes for all Occasions***

*Wedding Cakes &  
Celebration Cakes made to order  
Small Buffets &  
Afternoon Teas catered for*



**Sarah Mayo**

**HND MRIPHH**

Hollybank, 5 The Orchard, Kislingbury  
Northamptonshire NN7 4BG

**01604 830679**

**Mobile number: 07711 927742**

**Email: sarahmayo971@btinternet.com**

## **ACUPUNCTURE**



**Julie Neal, MBAC**

**Acupuncture treats a wide  
range of problems including  
pain, insomnia, stress  
and anxiety**

**I have a particular interest  
in fertility and IVF**

**Call to see if acupuncture  
could help you.**

**Home visits also available**

**Tel: 831199 or 07957 324586**

**E-mail: [julie@nice-needles.co.uk](mailto:julie@nice-needles.co.uk)**

### **KISLINGBURY BIN COLLECTION DATES. 2023**

#### **General waste week:**



General waste



Food recycling

February - 3rd and 17th

March - 3rd, 17th and 31st

April - 14th and 28th

May - 12th and 26th

June - 9th and 23rd

July - 7th and 21st

August - 4th, and 18th

September - 1st, 15th and 29th

October - 13th and 27th

November - 10th and 24th

December - to be confirmed

#### **Recycling week:**



Recycling



Garden waste



Food recycling

February - 10th and 24th

March - 10th and 24th

April - 7th and 21st

May - 5th and 19th

June - 2nd, 16th and 30th

July - 14th and 28th

August - 11th and 25th

September - 8th and 22nd

October - 6th and 20th

November - 3rd and 17th

December - to be confirmed



## **KISLINGBURY VILLAGE HALL**

**We once again ask you to consider becoming a committee member for the village hall – a vital asset to the village.**

If you wish to see what goes on, then feel free to come along to our next meeting on Tuesday 7th February, at 7.30pm in the Village Hall. All our meetings are held on the first Tuesday of each month.

**We are in desperate need of new members and new ideas.**

### **SECRETARY TO THE VILLAGE HALL COMMITTEE**

*Sadly, Doreen Hartwell wishes to relinquish her position of Secretary to the Village Hall Committee after more years' service than we care to remember!*

***If you would be interested in this position and want more information then please contact Doreen directly on 01604 830343. It is envisaged that initially you would "shadow" Doreen for a period of time, with the eventual aim of taking over the position.***

***Again , this is a vital component in the efficient running of your Village Hall and your help and input is needed!***



===== ANY VEHICLE =====

01604 830552

DIAGNOSTICS

Hours 08:00 - 17:00, Mon - Fri

SERVICING & REPAIRS

UNITS 1 & 6

WEST BAULK PROPERTIES

MOTs (can be carried out while you

BUGBROOKE ROAD

wait, by appointment only)

KISLINGBURY, NN7 4AY

[HELP@KIZZLEAUTOS.COM](mailto:HELP@KIZZLEAUTOS.COM)

WELDING

Bike MOTs - Friday 4.30 onwards

by appointment only



## Choose Quinton House...

At Quinton House School we deliver an innovative learning experience both within and outside of the classroom that is tailored to suit the needs of your individual child. Quinton offers a 21st century curriculum based on traditional values.

Book a visit today and discover our exceptional school where dreams are realised. Call Jo Sainsbury, Admissions Manager on 01604 684828.



[www.quintonhouseschool.co.uk](http://www.quintonhouseschool.co.uk)  

A co-educational independent day school for girls and boys aged 3-18 years.





# Kislingbury over Fifties



WINTER



***The KOF5 enjoying their Christmas Party at the Village Hall***

WE HAVE A VARIED PROGRAMME OF ACTIVITIES  
FOR THE COMING YEAR.

WE WELCOME YOU TO COME ALONG AND JOIN US.

The KOF5 meet at the Village Hall **every Thursday at 10.30 am** for coffee and a chat.

We welcome you to come along and join us. please contact us to arrange for a member to accompany you on your first visit to the KOF5.

Contact Mike Jackson Secretary for more information on  
01604831747 or [5fivejays@gmail.com](mailto:5fivejays@gmail.com)

M. PAYNE &  
SONS



EST. 2005



LOCAL VILLAGE MAN  
BUGBROOKE AND KISLINGBURY

MEL PAYNE  
TEL: 01604 833649  
MOBILE: 07761742997  
E-MAIL:  
MELPAYNE@BTINTERNET.COM

GARDEN CARE

FULLY INSURED

LAWNS CUT



TREE WORK



FENCING/DECKING



GROUND WORK/PATIOS

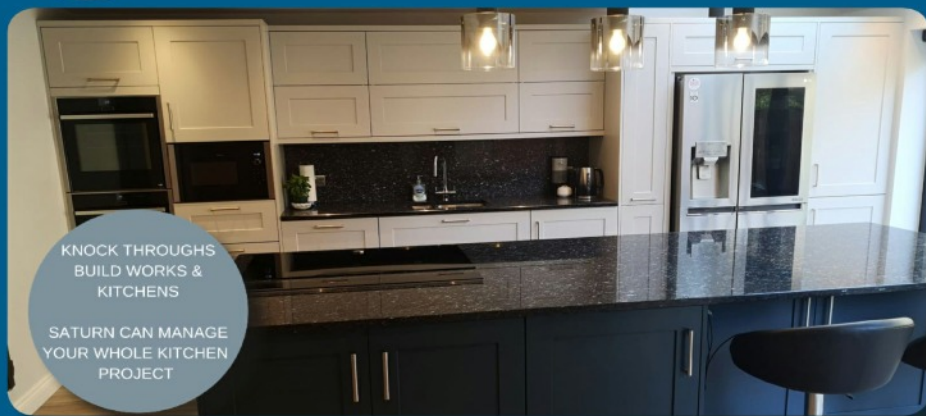


GENERAL TIDY UP



SATURN  
KITCHENS

FREE KITCHEN  
DESIGN



KNOCK THROUGHS  
BUILD WORKS &  
KITCHENS

SATURN CAN MANAGE  
YOUR WHOLE KITCHEN  
PROJECT

EXTENSIONS | KNOCK THROUGHS | GARAGE CONVERSIONS | BI FOLD DOORS



Saturn Interiors | 15 Ryehill Court, Lodge Farm Ind Estate, NN5 7EU  
T: 01604 582835 WWW.SATURNINTERIORS.CO.UK

# KISLINGBURY ART GROUP



**We have vacancies** at this point in time  
if you would like to join us –

The group is organised, to provide a venue for artists of all abilities from beginners to fully experienced; to meet together, to paint, and share the company of others with similar interests, in a non formalised group.

**We meet on Thursday afternoons at the Village Hall  
between 2 pm and 4pm**

**For further info. contact:  
Judith 830421      Mike 831747**



## Winter at Canon's Ashby

11th February – 26th March

10am – 3pm

### **Paw Prints and Poo Trail**

Bring your young nature detectives and look around the outdoor spaces for nice and nasty nature clues. What creatures live nearby, and how can you tell?

Normal admission prices apply.

Please dress up for the weather and remember your wellies!

[canonsashby@nationaltrust.org.uk](mailto:canonsashby@nationaltrust.org.uk)

### **View Kislingbury News On-Line**

Kislingbury News, including back issues, can be viewed on-line.

Simply go to [www.kislingburypc.org.uk](http://www.kislingburypc.org.uk)  
and click on the “News” tab.

or go to [www.kislingburyonline.co.uk](http://www.kislingburyonline.co.uk)  
and click on the “Kislingbury News” tab.

### **The Village Defibrillator based at The Sun**

#### **Instructions:-**

- Call 999
- They will give you the key code
- Go to The Sun
- Enter key code and open case
- Take defibrillator back to the patient in cardiac arrest
- Open defibrillator
- Follow voice instructions from defibrillator and administer as advised
- Administer CPR as advised by 999 operative
- Return defibrillator to The Sun and place in the cabinet



# To Kislingbury Canines from your Parish Council



**Please let the person you take for a walk know that  
there are 11 dog bins in Kislingbury:**

Millers Close

Nene Way

Mill Road (between Willow View and Nene Way)

Mill Road (on the Baptist Church Green)

Mill Road (opposite The Sun)

The Green

Hodges Lane (green corner with High Street)

Footpath behind the school

Camp Lane (Beech Lane end)

Camp Lane (Pocket Park)

Playing Fields Entrance.

Perhaps you could give them a treat if they use one of these.

**Please give them an extra special treat if they have to  
find another dog bin or take 'it' home for you.**

# ARE YOU ELDERLY AND FACING HARDSHIP THIS WINTER?

Your community charity, Kislingbury Town and Charity Estates, has provided financial or other assistance to elderly village residents in need for over 600 years.

**We face extraordinarily difficult times this Winter.** If you are elderly and are suffering hardship - particularly as a result of ill health - or have an elderly relative resident in the village in the same circumstances, we might be able to help.

## How can you help?

You tell us about the hardship you are suffering, in strictest confidence, and we will consider how we can help.

Recent examples include a grant towards the Village Food Bank scheme; contribution towards a stair lift and tracking device for an elderly resident; and support to cover a resident's exceptional medical expenses. Equally, we might make a one-off financial grant to help address a hardship.

## I know an elderly resident who could do with some support – what can I do?

Please contact our Clerk Jim Wood on **(01327) 872670** for a strictly confidential discussion – the Trustees can meet at short notice to consider applications.

Equally, if you are looking for funding towards facilities in the village which will promote community participation in sports or recreation, please give Jim a call.

# **THE PARISH CHURCH OF ST LUKE**

## **Services for February and March**

Our services at present have been arranged as below.

Any alterations will be published as soon as possible.

<b>Sunday 5th February</b>	<b>10.30am</b>	<b>Benefice Service at Harpole – no service at Kislingbury</b>
<b>Sunday 12th February</b>	<b>11.00am</b>	Holy Communion
<b>Sunday 19th February</b>	<b>11.00am</b>	Morning Worship
<b>Sunday 26th February</b>	<b>10.30am</b>	<b>Benefice Service at Harpole – no service at Kislingbury</b>
<b>Sunday 5th March</b>	<b>10.30am</b>	<b>Benefice Service at Rothersthorpe – no service at Kislingbury</b>
<b>Sunday 12th March</b>	<b>11.00am</b>	Holy Communion
<b>Sunday 19th March</b>	<b>11.00am</b>	Morning Worship
<b>Sunday 26th March</b>	<b>11.00am</b>	<b>Family worship for Mothering Sunday</b>

### **Kislingbury & Upton Community Church (KUCC)**

**Mill Lane, Kislingbury, NN7 4BD**

Kislingbury & Upton Community Church (KUCC) aims to be a Church for all ages and stages.

Tuesday Service in Kislingbury, between 10am and 11am  
www.KUCC.co.uk Email: [info@kucc.co.uk](mailto:info@kucc.co.uk) T: 07432 881576

### **St Patrick's Catholic Church**

**28 Peveril Road, Duston**

**Father Benny Joseph MSFS**

Email: [stpatrickduston@gmail.com](mailto:stpatrickduston@gmail.com)

<b>Mass Times</b>	Sunday	9.30am	Tuesday	9.30am
	Friday	9.30am	Holydays	9.30am

For more information visit: [www.stpatrickduston.org.uk](http://www.stpatrickduston.org.uk)

*Real Cask Ales*

*Guinness Accredited*



*Beer Garden*



**Opening Hours:**

Monday to Friday: 5pm – 11pm

Saturday: Midday – 11pm

Sunday: 11am – 10.30pm

**Food Served:**

Tuesday to Saturday:

6pm – 9pm

Sunday: Midday – 3pm

**Food offer**

Every Tuesday - Pie and a pint £12

Every Wednesday - Curry and a pint £12

Pizzas and main menu served Thursday - Saturday

Sunday lunch served from midday - 3pm

See [www.thesuninnkislingbury.co.uk](http://www.thesuninnkislingbury.co.uk) for current menus

**Coming Up**

**February**

**19th Feb - Psychic Night** starts 7.30pm

**4th Feb - Six Nations Rugby** starts

**14th Feb - Pie and a pint with a  
'Valentine's Twist'**

**21st Feb - Open Mic Night** starts  
7.30pm

**26th Feb - Monthly Quiz** 7pm start

**March**

**17th Mar - St Patrick's Day** - live  
band & Bandit Street food

**19th Mar - Mothers' Day** - Free  
glass of Prosecco for Mums, when  
dining

**26th Mar - Monthly Quiz** 7pm start

**Announcements**

2 courses for £12 available throughout Feb on Thurs, Fri & Sat

**4th Feb** - Six Nations Rugby starts - 10% off Guinness on all game  
weekends until March 18th

**4th Feb** - Cold Snack Menu starts



@thesuninnkislingbury

Tel No: 01604 833571